



Assiut University
Faculty of Science
Zoology Department

Summer Semester Exam
General Zoology

Time: 2 hour
Course Code: 100Z
September, 2022

Answer the following questions (50 marks)

Question 1: Choose the correct answer of the following (30marks):

- Blood cells are belonging to**
 - Skeletal connective tissue
 - Epithelial tissue
 - Vascular connective tissue.
 - Nervous tissue.
- Rank the following terms from simplest to most complex**
 - Organelles, cells, tissues, organs, organism
 - Cells, organelles, organs, tissues, organism
 - Tissues, cells, organelles, organs, organism
 - Organs, cells, organelles, tissues, organism
- Which organelles modify, sort and package proteins in the cell?**
 - Mitochondria
 - Ribosomes
 - Golgi complex
 - Lysosomes
- The entrance of liquid materials across the cell membrane is called.....**
 - Phagocytosis
 - Pinocytosis
 - Exocytosis
 - Plasmolysis
- are cube-like cells with large, spherical central nuclei.**
 - Pseudostratified columnar epithelium.
 - columnar epithelium.
 - Cuboidal epithelium
 - squamous epithelium.
- Which one of the following is NOT considered a connective tissue?**
 - Cartilage
 - Bone
 - Muscle
 - Blood
- The nucleus is enclosed in a double membrane known as.....**
 - Sarcoplasm
 - Nuclear envelope
 - Cell membrane
 - Nucleoplasm
- Thebound to the hydrophobic interior of the phospholipid bilayer.**
 - Integral protein
 - Peripheral protein
 - Glycoprotein
 - Glycolipid.
- All types of connective tissue originate from.....**
 - Mesoderm
 - Endoderm
 - Ectoderm
 - All of them
- Which membranous organelles are concerned with synthesis of lipids?**
 - Golgi apparatus
 - Nucleus
 - Smooth Endoplasmic Reticulum
 - Rough Endoplasmic Reticulum

25. The yolk concentrated at vegetal pole in theegg.
 a) Isolecithal b) Telolecithal c) Centrolecithal d) All of them
26.support and protect neurons as they do not participate in signal transmission.
 a) Neurons b) Neuroglia c) Axons d) Myofibrils
27. Thehormone stimulates milk production.
 a) Prolactin b) FSH c) LH d) GH
28. secretes calcitonin hormone which stimulates calcium uptake by bones.
 a) Thyroid gland b) adrenal gland c) Pancreas d) Pineal gland.
29. The infective stage of *Fasciola gigantica* called
 a) metacercaria b) forked tail cercaria c) larva d) All of them.
30. Phylum Annelida belongs toanimals.
 a) Coelomate b) Acoelomate c) Pseudocoelomate d) All of them.

Question 2: Complete the following sentences _____ (10 marks)

1. A process of male gametes formation is called (.....)
2. A membrane bound vesicle with hydrolyzing and digestive enzymes. (.....)
3. A science of biology deals with the formation, structure and function of cells. (.....)
4. The body tissue which covers exposed surfaces, lines body cavities and forms Glands (.....)
5. Chondrocytes and osteocytes are cells of.....tissue. (.....)
6. The entrance of solid material into the cell across the cell membrane (.....)
7. Group of cells that are similar in structure and perform common or related functions. (.....)
8. The gland which release their secretory product into the extracellular space from which it enters the bloodstream (.....)
9. The term..... refers to the fact that an epithelial tissue has only one layer of cells. (.....)
10. The movement of molecules from high to low concentration through the lipid bilayer. (.....)
11. Which attached organelles give the rough endoplasmic reticulum its name? (.....)
12. Tissues which has little extracellular material (small spaces between cells) (.....)
13. Heterogenous rounded bodies containing digested elements (.....)
14. Both glycolipids and glycoproteins on the cell membrane are called (.....)

15. The science of grouping and naming organisms based on similarities.
(.....)
16. Which membranous organelles are the sites of energy production in cells?
(.....)
17. What is the name of the body cavity that is completely surrounded by tissue derived from the mesoderm?
(.....)
18. Process by which vesicles release their contents to the outside of the cell.
(.....)
19. A type of eggs that have a little amount of yolk concentrated in the center of the egg around the nucleus.
(.....)
20. Diploblastic animals in which the gastro vascular cavity (Coelenteron) with a single opening that serves as both mouth and anus . (.....)

Question 3: Match each of the following with its single correct answer (5 marks):

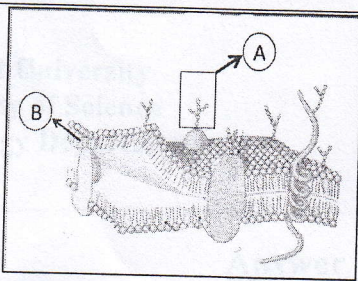
Note: The answer must be in the table below

1. Phylum Cnidaria	(A) A two name system for writing scientific names
2. Sponges	(B) Unicellular and moves by pseudopodia.
3. <i>Amoeba sp</i>	(C) The nervous system in the form of nerve net.
4. Phylum Annelida	(D) biologically active substances secreted by endocrine glands
5. Gametogenesis	(E) Body with pores (ostia)
6. Phylum Nematoda	(F) Their body divided into number of annuli (segmented body).
7. Phylum Platyhelminthes	(G) Digestive system incomplete
8. Binomial nomenclature	(H) a process by which the diploid germ cells (2n) undergo a number of changes to form mature haploid (1n) gametes.
9. Phylum Apicomplexa	(I) Characterized by the presence of (apical complex) associated with anterior end.
10. Hormones	(J) Pseudocoelomate animals

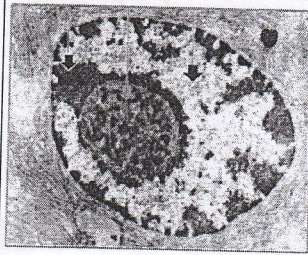
The answer

No. of question	1	2	3	4	5	6	7	8	9	10
Correct answer										

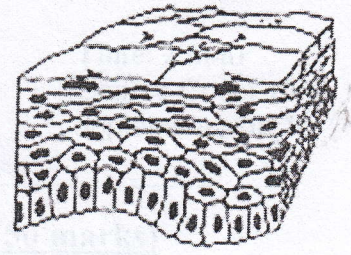
Question 4: Answer the following (5 marks):



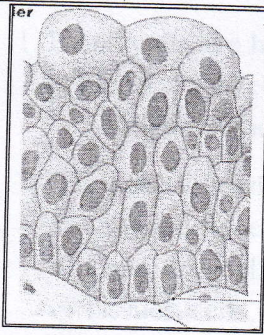
1) Identify:.....
 Lable A:.....
 Lable B:.....



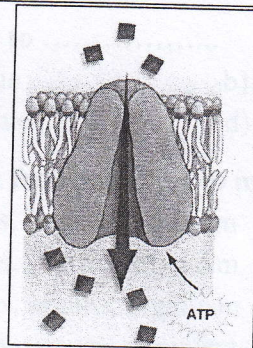
2) Identify:.....



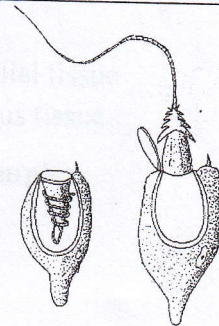
3) Tissue name :.....
 Example:.....



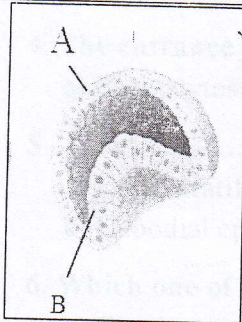
4) Tissue name :.....
 Example:.....



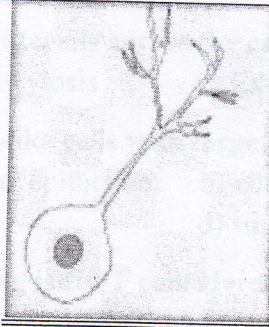
5) Identify:.....



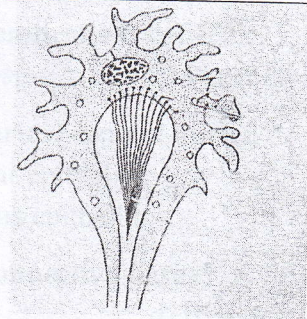
6) Identify:.....
 Give an example having this structure:



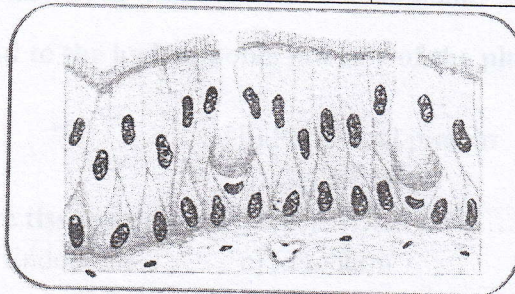
7) Identify:.....
 Lable A:.....
 Lable B:.....



6) Identify:.....



9) Idenyify:.....
 Give an example having this structure:



10) Tissue name :.....

Dr. Asmaa Ramadan
 With my best wishes